

YK080 Human PYY EIA

For Measurement of Human PYY

FOR RESEARCH USE ONLY

<Distributed by>

Xceltis 

Xceltis GmbH

Im Tal 12

74909 Meckesheim / Germany

Tel.: +49-6226-9724-18

Fax: +49-6226-9724-19

E-mail: info@xceltis.de

Contents

| | | |
|---------------|------------------------------------|-------------|
| I . | Introduction | 2 |
| II . | Characteristics | 3 |
| III . | Composition | 4 |
| IV . | Method | 5-6 |
| V . | Notes | 7 |
| VI . | Performance Characteristics | 8-10 |
| VII . | Stability and Storage | 10 |
| VIII . | References | 11 |

- Please read all the package insert carefully before beginning the assay -

YK080 Human PYY EIA Kit

I. Introduction

This enzyme immunoassay (EIA) kit is a stable and convenient assay system for human peptide YY (PYY). PYY was isolated initially by Tatemoto et al. (1980) from the extract of pig duodenum and shown to be a polypeptide consisting of 36 amino acids residues. PYY is homologous to pancreatic polypeptide (PP) and neuropeptide Y (NPY). PYY is localized mainly in endocrine cells in the intestine (ileum, colon, and rectum). PYY shows an inhibitory action on contraction of the gastrointestinal tract and on secretion of pancreatic and gastric juice. PYY is released by taking diet. The PYY level in human blood decreases after resection of the intestine, possibly be due to the decrease in number of the endocrine cells secreting PYY.

The EIA kit is prepared by using synthetic human PYY (3-36) as standard and biotinylated human PYY (3-36) as labeled antigen. The kit can be used for measurement of PYY in human plasma or serum with high sensitivity. It will be a specifically useful tool for PYY research.

| YK080 Human PYY EIA Kit | Contents |
|---|------------------------------------|
| ▼ The assay kit can measure human PYY within the range of 0.082-20 ng/mL. | 1) Antibody coated plate |
| ▼ The assay is completed within 16-18 hr. + 3 hr. | 2) Standard |
| ▼ With one assay kit, 41 samples can be measured in duplicate. | 3) Labeled antigen |
| ▼ Test sample: Human plasma & serum Sample volume: 50 µL | 4) SA-HRP solution |
| ▼ The 96-wells plate in kit was consisted by 8-wells strips, and the strips can be used separately. | 5) Enzyme substrate solution (TMB) |
| ▼ Precision and reproducibility Intra-assay CV (%) Human serum 3.67-5.13 Human plasma 6.08-8.52 Inter-assay CV (%) Human serum 2.33-6.55 Human plasma 5.45-10.26 | 6) Stop solution |
| ▼ Stability and Storage Store all of the components at 2-8°C. The kit is stable under the condition for 6 months from the date of manufacturing. The expiry date is stated on the package. | 7) Buffer solution |
| | 8) Washing solution (concentrated) |
| | 9) Adhesive foil |

II. Characteristics

This EIA kit is used for quantitative determination of human PYY in plasma and serum samples. The kit is characterized by its sensitive quantification and high specificity. In addition, it has no influence by other components in samples. Human PYY (3-36) standard is highly purified synthetic product.

<Specificity>

The EIA kit shows 100% cross reactivity to human PYY (3-36) and human PYY (1-36).

<Test Principle>

This EIA kit for determination of human PYY in samples is based on a competitive enzyme immunoassay using combination of highly specific antibody to human PYY and biotin-avidin affinity system. To the wells of plate coated with rabbit anti human PYY antibody, standard or samples, labeled antigen are added for competitive immunoreaction. After incubation and plate washing, horse radish peroxidase (HRP) labeled streptoavidin (SA) is added to form HRP labeled streptoavidin-biotinylated antigen-antibody complex on the surface of the wells. Finally, HRP enzyme activity is determined by 3,3',5,5'-Tetramethylbenzidine (TMB) and the concentration of human PYY is calculated.

III. Composition

| Component | Form | Quantity | Main Ingredient |
|------------------------------------|------------------|--------------------|--|
| 1. Antibody coated plate | Microtiter plate | 1 plate (96 wells) | Rabbit anti human PYY antibody |
| 2. Human PYY Standard | Lyophilized | 1 vial (20ng) | Synthetic human PYY (3-36) |
| 3. Labeled antigen | Lyophilized | 1 vial | Biotinylated human PYY (3-36) |
| 4. SA-HRP solution | Liquid | 1 bottle (12mL) | HRP labeled streptoavidin |
| 5. Enzyme substrate solution | Liquid | 1 bottle (12 mL) | 3, 3',5 ,5'-Tetramethylbenzidine (TMB) |
| 6. Stop solution | Liquid | 1 bottle (12 mL) | 1M H ₂ SO ₄ |
| 7. Buffer solution | Liquid | 1 bottle (25 mL) | Tris-HCl/saline buffer |
| 8. Washing solution (concentrated) | Liquid | 1 bottle (50 mL) | Concentrated saline |
| 9. Adhesive foil | | 3 sheets | |

IV. Method

< Equipment required >

1. Micropipettes, multi-channel pipettes for 8 wells or 12 wells and their tips
2. Photometer for microtiter plate (Plate reader), which can read extinction 2.5 at 450 nm
3. Microtiter plate shaker
4. Glass test tubes for preparation of standard solution
5. Washing device for microtiter plate and dispenser with aspiration system
6. Graduated cylinder (1,000 mL)
7. Distilled water or deionized water

< Preparatory work >

1. Preparation of standard solution:
Reconstitute the human PYY standard with 1 mL of buffer solution, which affords 20ng/mL standard solution. The reconstituted standard solution (0.1mL) is diluted with 0.2 mL of buffer solution that yields 6.667 ng/mL standard solution. Repeat the dilution procedure to make each standard solution of 2.222, 0.741, 0.247 and 0.082 ng/mL. Buffer solution itself is used as 0ng/mL.
2. Preparation of labeled antigen:
Reconstitute labeled antigen with 6mL of buffer solution.
3. Preparation of washing solution:
Dilute 50 mL of washing solution (concentrated) to 1000 mL with distilled or deionized water.
4. Other reagents are ready for use.

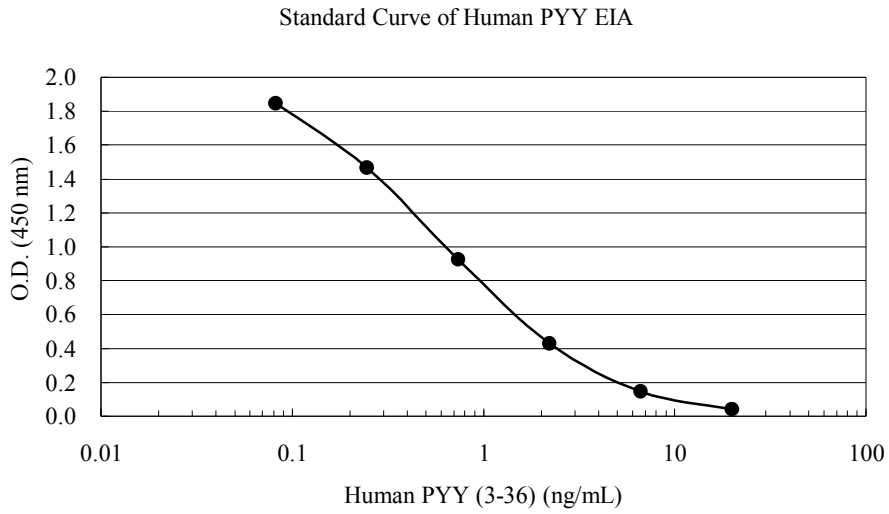
< Procedure >

1. Before start assay, bring all the reagents and samples to room temperature (20~30°C).
2. Add 0.3 mL/well of washing solution into the wells and aspirate the washing solution in the wells. Repeat this washing procedure further twice (total 3 times). Finally, invert the plate and tap it onto an absorbent surface, such as paper toweling, to ensure blotting free of most residual washing solution.
3. Fill 25 μ L of buffer solution into the wells first, then introduce 50 μ L of each of standard solutions (0, 0.082, 0.247, 0.741, 2.222, 6.667, 20 ng/mL) or samples and finally add 25 μ L of labeled antigen into the wells. The total pipetting time of standard solutions and samples for a whole plate should not exceed 30 min.
4. Cover the plate with adhesive foil and incubate it at 4°C overnight for 16 ~ 18 hours. (Still, plate shaker not need.)
5. After incubation, move the plate back to room temperature keeping for about 40 minutes and take off the adhesive foil, aspirate and wash the wells 4 times with approximately 0.3 mL/well of washing solution. Finally, invert the plate and tap it onto an absorbent surface, such as paper toweling, to ensure blotting free of most residual washing solution.
6. Pipette 100 μ L of SA-HRP solution into each of the wells.
7. Cover the plate with adhesive foil and incubate it at room temperature (20 ~ 30°C) for 2 hour. During the incubation, the plate should be shake with a plate shaker.
8. Take off the adhesive foil, aspirate and wash the wells 4 times with approximately 0.3 mL/well of washing solution. Finally, invert the plate and tap it onto an absorbent surface, such as paper toweling, to ensure blotting free of most residual washing solution.
9. Add 100 μ L of enzyme substrate solution (TMB) to each of the well, cover the plate with adhesive foil and keep it for 30 minutes at room temperature in a dark place for color reaction. (Still, plate shaker not need.)
10. Add 100 μ L of stop solution into each of the wells to stop color reaction.
11. Read the optical absorbance of the solution in the wells at 450 nm. The dose-response curve of this assay fits best to a 4 (or 5)-parameter logistic equation. The results of unknown samples can be calculated with any computer program having a 4 (or 5)-parameter logistic function. Otherwise calculate mean absorbance values of wells containing standards and plot a standard curve on semilogarithmic graph paper (abscissa: concentration of standard; ordinate: absorbance values). Use the average absorbance of each sample to determine the corresponding value by simple interpolation from this standard curve.

V. Notes

1. If same blood sample is to be prepared for both the PYY (1-36) and (3-36), and specifically the PYY (3-36) determinations, DPP IV inhibitor should be added immediately to the blood. EDTA-2Na additive blood collection tube is recommended for the plasma collection. Serum and plasma samples must be used as soon as possible after collection. If the samples are tested later, they should be divided into test tubes in small amount and frozen at or below -30°C . Avoid repeated freezing and thawing of samples.
2. Standard and labeled antigen solutions should be prepared immediately before use. This kit can be used dividedly in strips of the plate. In such case, the rest of reconstituted reagents (standard and labeled antigen) should be stored at -30°C .
3. The total pipetting time of standard solutions and samples for a whole plate should not exceed 30 min.
4. During storage of washing solution (concentrated) at $2-8^{\circ}\text{C}$, precipitates may be observed, however they will be dissolved when diluted. Diluted washing solution is stable for 6 months at $2-8^{\circ}\text{C}$.
5. Pipetting operations may affect the precision of the assay, pipette standard solutions or samples precisely into each well of plate. In addition, using clean test tubes or vessels in assay and use new tip for each standard or sample to avoid cross contamination.
6. When sample value exceeds 20 ng/mL, it needs to be diluted with buffer solution to proper concentration.
7. Perform all the determination in duplicate.
8. Read plate optical absorbance of reaction solution in wells as soon as possible after stop color reaction.
9. To quantitate accurately, always run a standard curve when measuring samples.
10. Protect reagents from strong light (e.g. direct sunlight) during storage and assay.
11. Satisfactory performance of the test is guaranteed only when reagents are used from combination pack with identical lot number.

VI. Performance Characteristics



<Analytical recovery>

<Human Serum A>

| Human PYY added(ng/mL) | Observed (ng/mL) | Expected (ng/mL) | Recovery (%) |
|------------------------|------------------|------------------|--------------|
| 0 | 0.376 | | |
| 0.2 | 0.579 | 0.576 | 100.52 |
| 1.0 | 1.357 | 1.376 | 98.62 |
| 5.0 | 4.712 | 5.376 | 87.65 |

<Human Serum B>

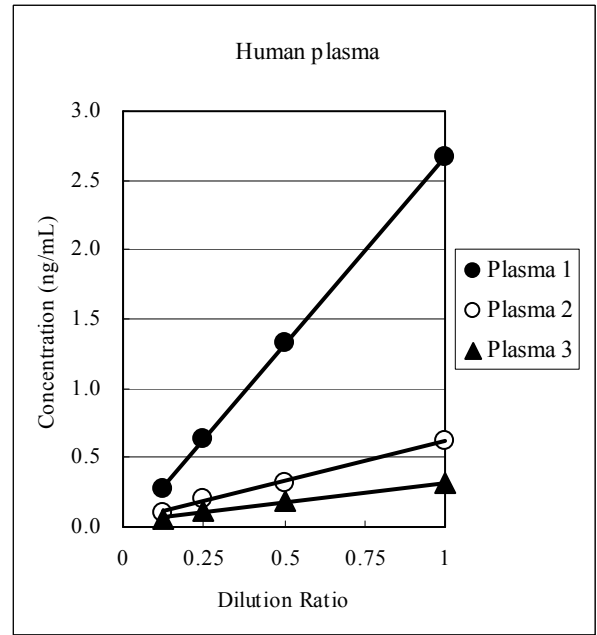
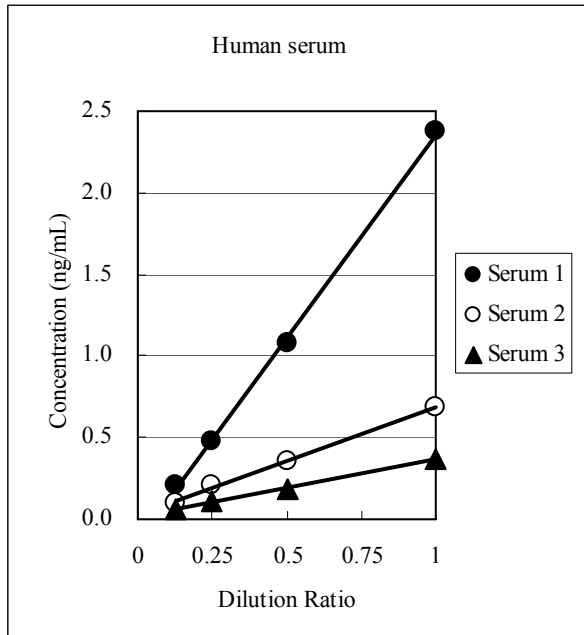
| Human PYY added(ng/mL) | Observed (ng/mL) | Expected (ng/mL) | Recovery (%) |
|------------------------|------------------|------------------|--------------|
| 0 | 0.337 | | |
| 0.2 | 0.516 | 0.537 | 96.09 |
| 1.0 | 1.296 | 1.337 | 96.93 |
| 5.0 | 4.897 | 5.337 | 91.76 |

<Human Serum C>

| Human PYY added(ng/mL) | Observed (ng/mL) | Expected (ng/mL) | Recovery (%) |
|------------------------|------------------|------------------|--------------|
| 0 | 0.677 | | |
| 0.2 | 0.913 | 0.877 | 104.10 |
| 1.0 | 1.821 | 1.677 | 108.59 |
| 5.0 | 6.257 | 5.677 | 110.22 |

| <Human Serum D> | | | |
|---------------------------|---------------------|---------------------|-----------------|
| Human PYY added(ng/mL) | Observed (ng/mL) | Expected (ng/mL) | Recovery (%) |
| 0 | 0.336 | | |
| 0.2 | 0.536 | 0.536 | 100.00 |
| 1.0 | 1.307 | 1.336 | 97.83 |
| 5.0 | 4.251 | 5.336 | 79.67 |
| <Human Plasma A> | | | |
| Human PYY added(ng/mL) | Observed (ng/mL) | Expected (ng/mL) | Recovery (%) |
| 0 | 0.341 | | |
| 0.2 | 0.546 | 0.541 | 100.92 |
| 1.0 | 1.318 | 1.341 | 98.28 |
| 5.0 | 4.447 | 5.341 | 83.26 |
| <Human Plasma B> | | | |
| Human PYY added(ng/mL) | Observed (ng/mL) | Expected (ng/mL) | Recovery (%) |
| 0 | 0.336 | | |
| 0.2 | 0.548 | 0.536 | 102.24 |
| 1.0 | 1.304 | 1.336 | 97.60 |
| 5.0 | 4.212 | 5.336 | 78.94 |
| <Human Plasma C> | | | |
| Human PYY added(ng/mL) | Observed (ng/mL) | Expected (ng/mL) | Recovery (%) |
| 0 | 0.605 | | |
| 0.2 | 0.847 | 0.805 | 105.22 |
| 1.0 | 1.728 | 1.605 | 107.66 |
| 5.0 | 5.669 | 5.605 | 101.14 |
| <Human Plasma D> | | | |
| Human PYY added(ng/mL) | Observed (ng/mL) | Expected (ng/mL) | Recovery (%) |
| 0 | 0.331 | | |
| 0.2 | 0.538 | 0.531 | 101.32 |
| 1.0 | 1.395 | 1.331 | 104.81 |
| 5.0 | 4.631 | 5.331 | 86.87 |

< Dilution test >



<Precision and reproducibility>

| Test sample | Intra-assay CV(%) | Inter-assay CV(%) |
|--------------|-------------------|-------------------|
| Human serum | 3.67-5.13 | 2.33-6.55 |
| Human plasma | 6.08-8.52 | 5.45-10.26 |

VII. Stability and Storage

< Storage > Store all of the components at 2-8°C.

< Shelf life > This kit is stable under the condition for 6 months from the date of manufacturing. The expiry date is stated on the package.

< Package > For 96 tests per one kit including standards

VIII. References

1. Adrin, T.E., Smith, H.A., Calvert, S.A., Aynsley-Green, A. and Bloom, S.R. (1986): Elevated plasma peptide YY in human neonates and infants. *Pediatric Res.*, **20**:1225-1227.
2. Adrian T.E., Ferri, G.L., Bacarese-Hamilton, A.J., Fuesl, H.S., Polak, J.M. and Bloom, S.R.(1995): Human distribution and release of a putative new gut hormone, peptide YY. *Gastroenterology*, **89**: 1070-1077.
3. El-Salhy, M., Grimelius, L., Wilander, E., Ryberg B., Terenius, L., Lundburg, J.M. and Tatemoto, K.(1983): Immunocytochemical identification of polypeptide YY(PYY) cells in the human gastrointestinal tract. *Histochemistry*, **77**:15-23.
4. Greeley, G.H.Jr., Hashimoto, T., Izukawa, M., Gomez, G., Jeng, J. Hill, F.L.C., Luis, F., and Tompson, J.C.(1989): A comparison of intraduodenally and intracolonicly administered nutrients on the release of peptide YY in the dog. *Endocrinology*, **125**:1761-1765.
5. Greeley, G.H.Jr., Hill, F. L. C., Spannagel, A. and Tompson, J.C.(1987): Distribution of peptide YY in gastrointestinal tract of the rat dog, and monkey. *Regul.Pept.*, **19**, 365-372.
6. Gomez, G., Zhang, T., Rajaraman, S., Thakore, K.N., Yanaihara, N., Townsend and C.M.Jr., Tompson, J.C. and Greeley, G.H.Jr.(1995): Intestinal peptide YY : ontogeny of gene expression in rat bowel and trophic action on rat and mouse bowel. *Am J.Physiol.* **268**, G71-G81.
7. Larhammar, D.(1996): Evolution of neuropeptide Y, peptide YY and pancreatic polypeptide: *Regul.Pept.*, **62**, 1-11.

<Manufacturer>

Yanaihara Institute Inc.

2480-1 Awakura, Fujinomiya-shi, Shizuoka 418-0011

JAPAN

Update at Feb 2, 2009